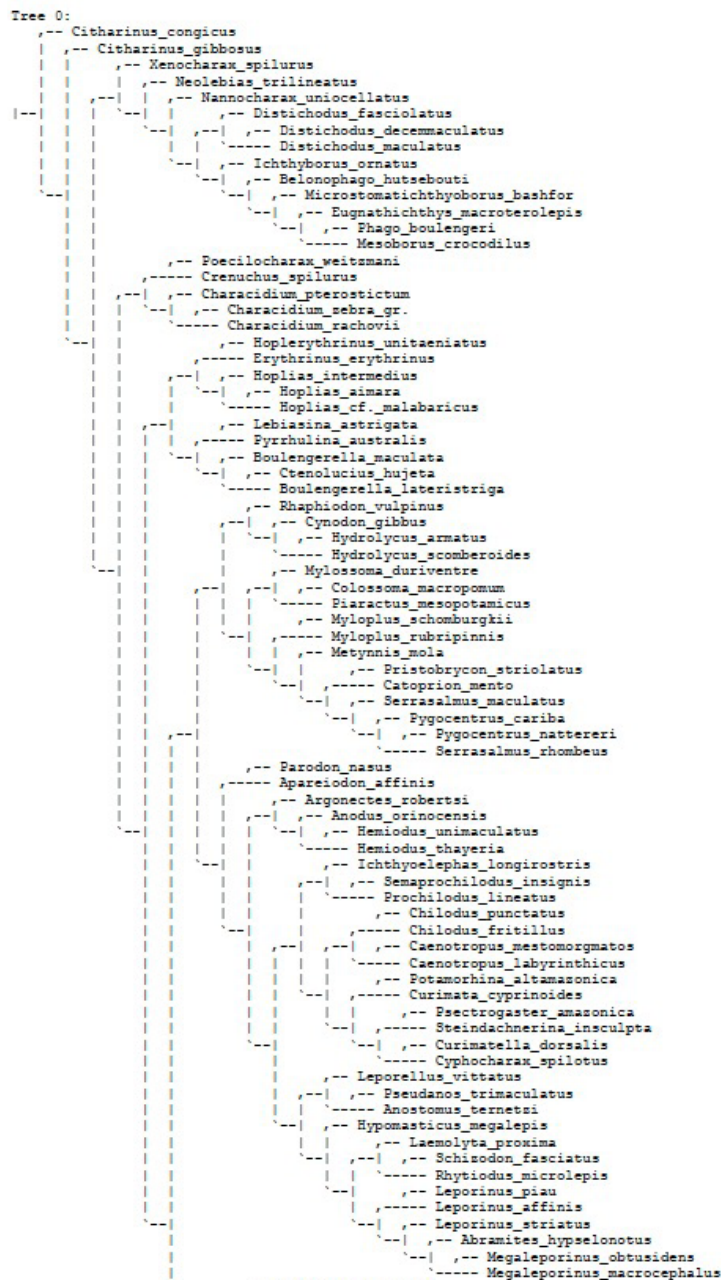


## SUPPLEMENTARY MATERIAL

**S4** | Collection of all most parsimonious trees obtained under all explored conditions. A compressed file containing trees in TRE format (Download complete file here: <https://www.ni.bio.br/content/v22n1/1982-0224-2023-0113/supplementary/1982-0224-ni-22-01-e230113-s4.zip>).



➔ Download complete file here: <https://www.ni.bio.br/content/v22n1/1982-0224-2023-0113/supplementary/1982-0224-ni-22-01-e230113-s4.zip>

## HOW TO CITE THIS ARTICLE

- **Ferreira KM, Ribeiro AC, Lima FCT, Silva HP, Ferreira DC, Mirande JM.** A new species of *Inpaichthys* from the rio Canamã, rio Aripuanã basin, Mato Grosso State, Brazil, with a redefinition of the genus (Characidae: Stethaprioninae). *Neotrop Ichthyol.* 2024; 22(1):e230113. <https://doi.org/10.1590/1982-0224-2023-0113>



This is an open access article under the terms of the Creative Commons Attribution License, which permits use, distribution and reproduction in any medium, provided the original work is properly cited.

Distributed under  
Creative Commons **CC-BY** 4.0

© 2024 The Authors.  
Diversity and Distributions Published by SBI



Official Journal of the  
Sociedade Brasileira de Ictiologia