

03/05/2023, 11:48

ASAP Results

ASAP Web results

date:2023-02-14T10:21:42
 input file:matriz_end_may_witout_roof.fasta
 nb of sequences:27
 length of seqs:600
 subst. model:JC69 Jukes-Cantor
 recurs split pval:1.000000e-02

Split probability: 0.010000 sequence length: 600

Save Spart text File [here](#)

Save Spart XML File [here](#)

10 best partitions found by ASAP (see [FAQ](#) for more details)

The lower the score, the better the partition

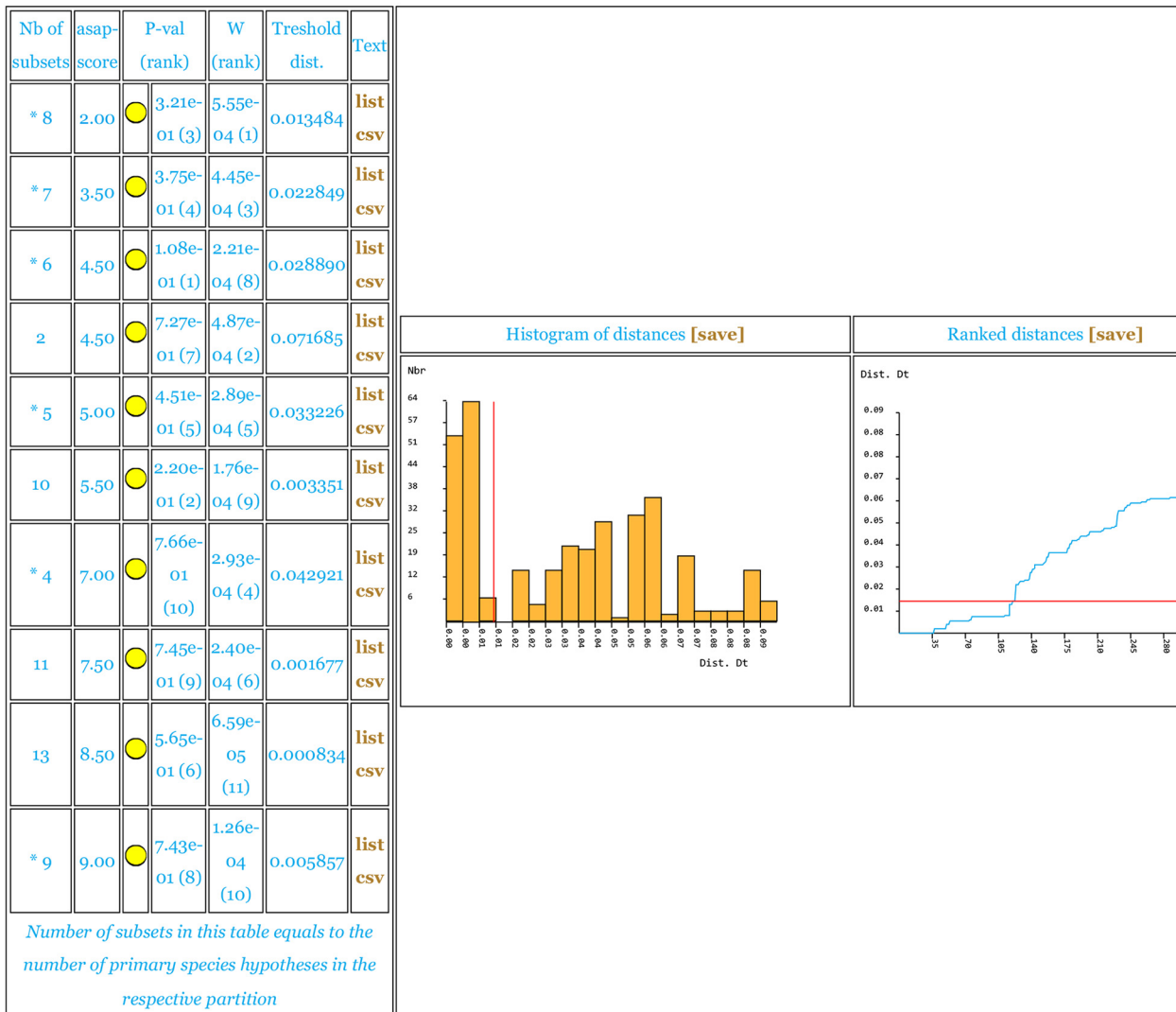
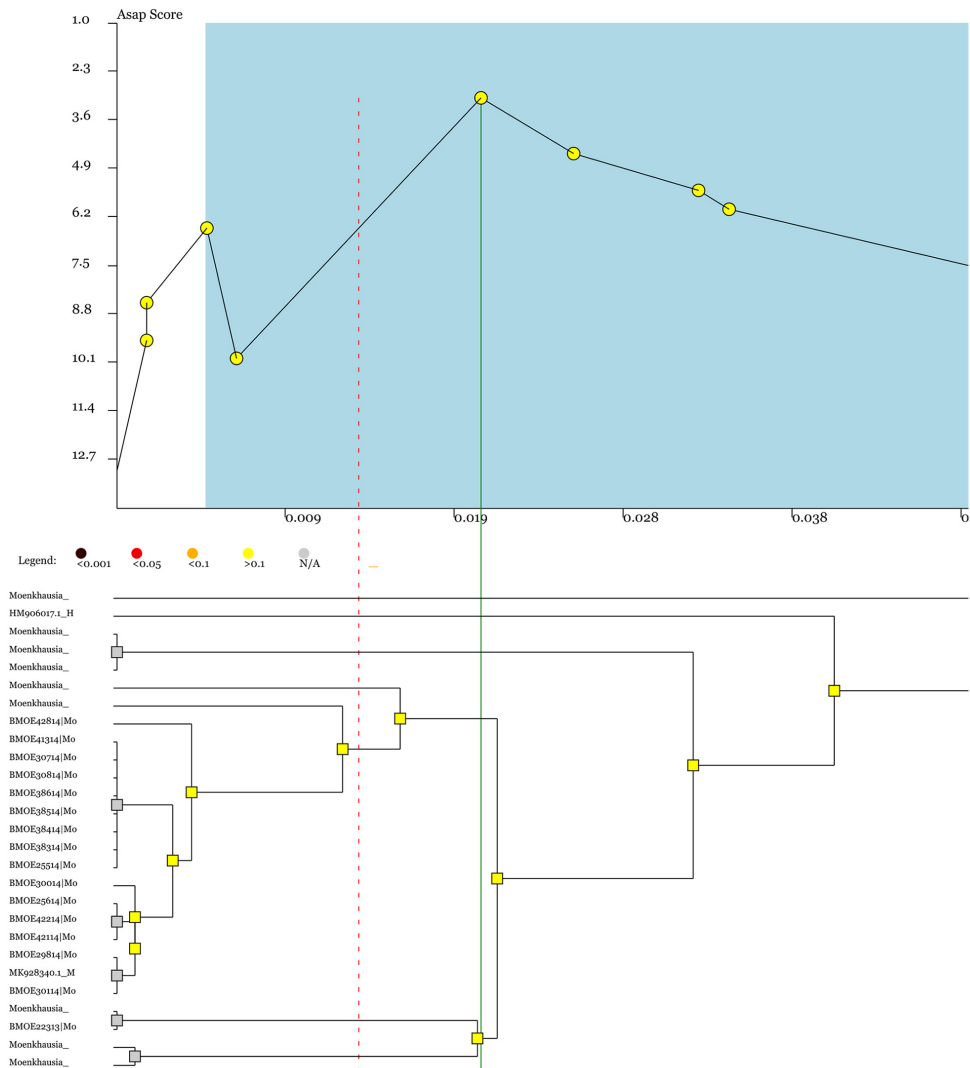


FIGURE S1 | Number of groups inside partitions and delimitations of the ASAP analysis. ➔



[View/save curves and dendrogram here](#)

Responsive Crossing lines Legend: Green Line= grouping distance (Dc)- Red line = threshold distance(Dt)

Running time: 0 min 0 seconds

<https://bioinfo.mnhn.fr/abi/public/asap/temp/2680.1804289383/results.html>

2/2

Neotropical Ichthyology



This is an open access article under the terms of the Creative Commons Attribution License, which permits use, distribution and reproduction in any medium, provided the original work is properly cited.

Distributed under Creative Commons **CC-BY 4.0**

© 2024 The Authors. Diversity and Distributions Published by SBI



Official Journal of the Sociedade Brasileira de Ictiologia

FIGURE S1 | (Continued)

HOW TO CITE THIS ARTICLE

- **Reia L, Silva GSC, Oliveira C, Benine RC.** New reddish species of *Moenkhausia* Eigenmann (Characiformes: Characidae) from the upper rio Xingu basin, Brazil. *Neotrop Ichthyol.* 2024; 22(1):e230089. <https://doi.org/10.1590/1982-0224-2023-0089>