

FIGURE S5 | Full maximum clade credibility tree.

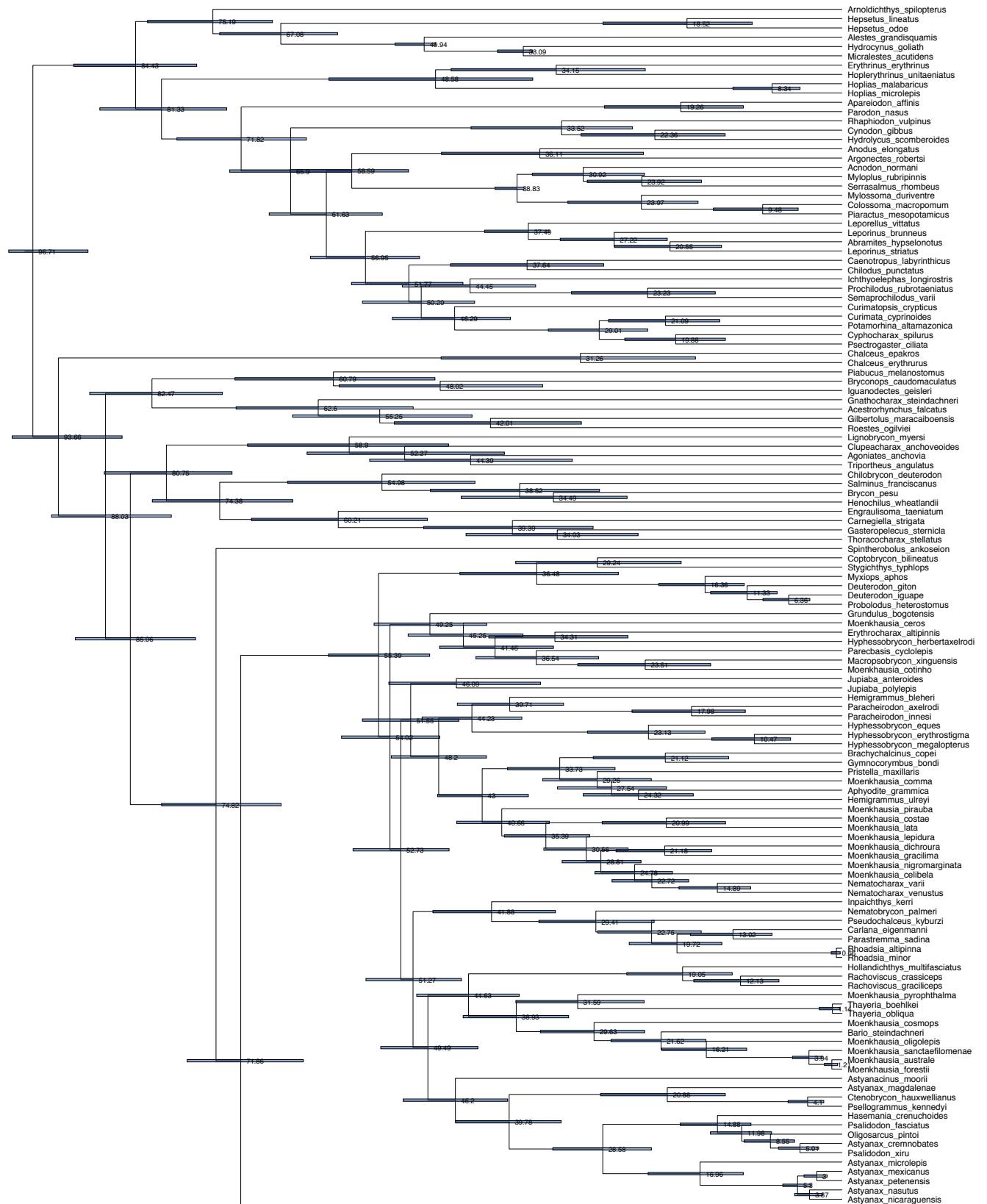
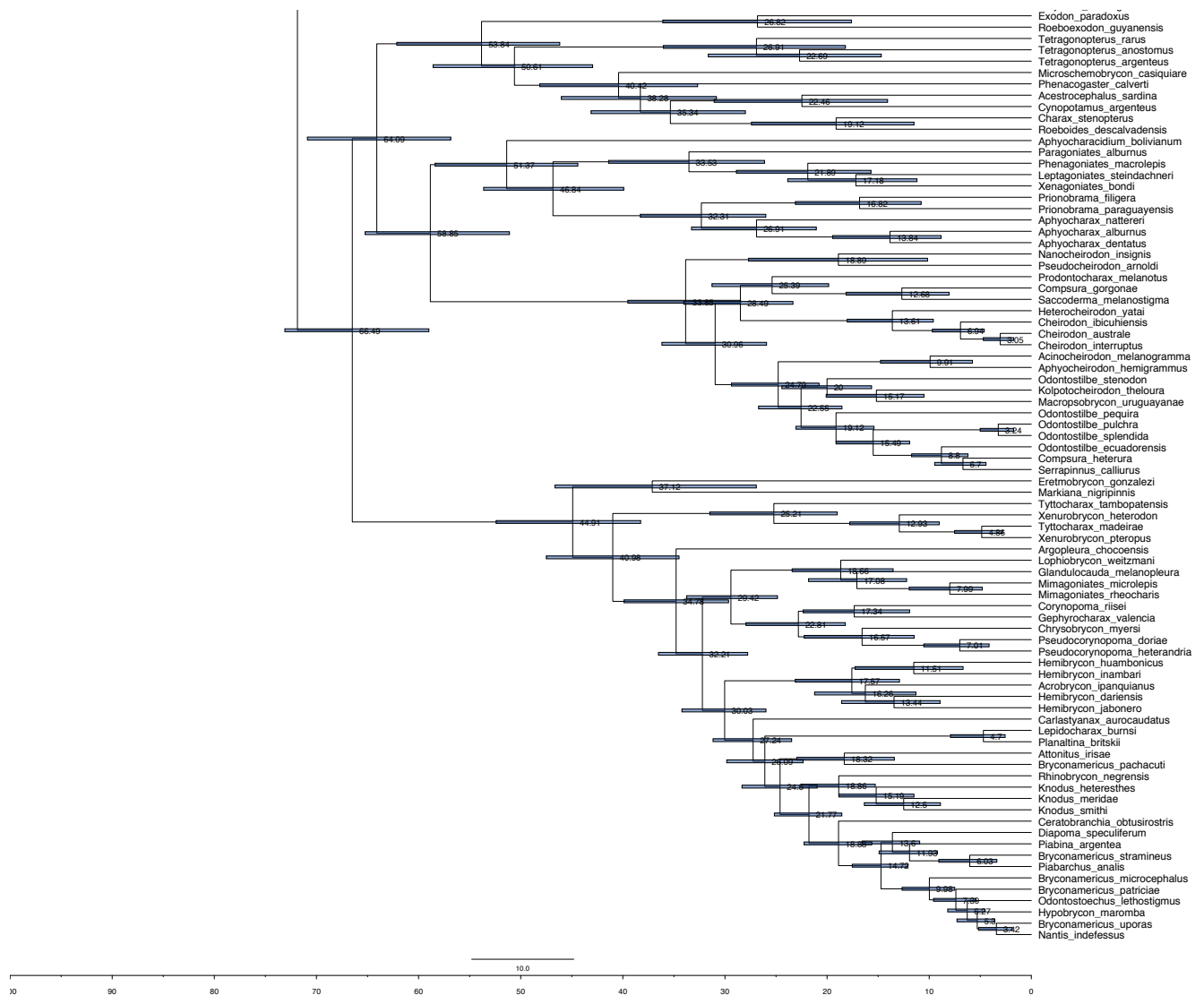


FIGURE S5 | (Continued)



Neotropical Ichthyology



This is an open access article under the terms of the Creative Commons Attribution License, which permits use, distribution and reproduction in any medium, provided the original work is properly cited.

Distributed under
Creative Commons **CC-BY 4.0**

© 2022 The Authors.
Diversity and Distributions Published by SBI



Official Journal of the
Sociedade Brasileira de Ictiologia

HOW TO CITE THIS ARTICLE

- Cocalón RV, Tan M. Divergence times of the *Rhoadsia* clade (Characiformes: Characidae). *Neotrop Ichthyol.* 2022; 20(4):e220054. <https://doi.org/10.1590/1982-0224-2022-0054>