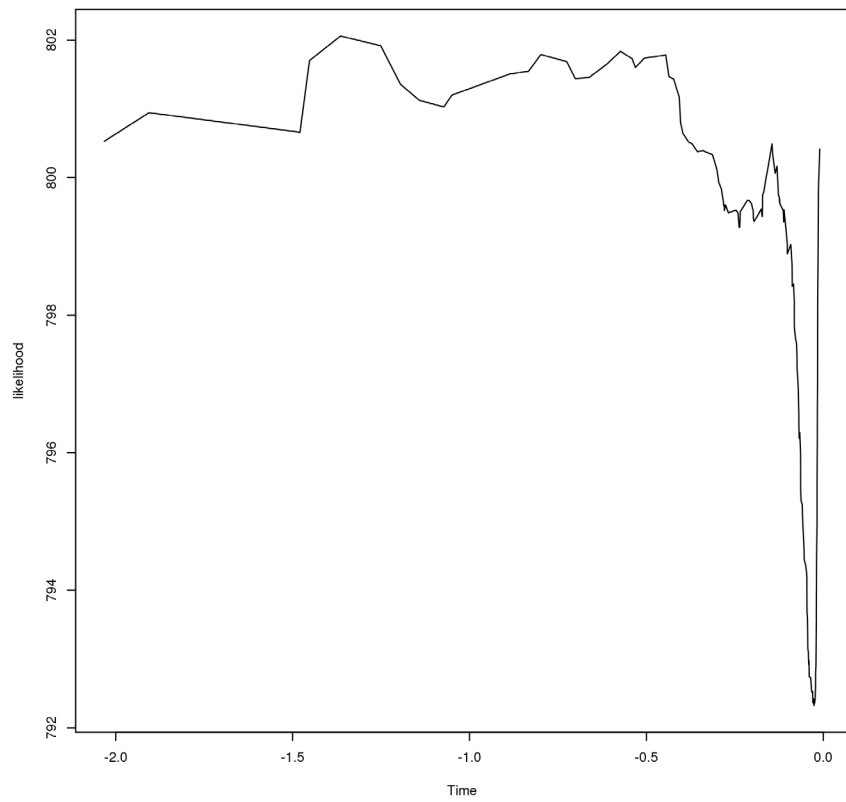
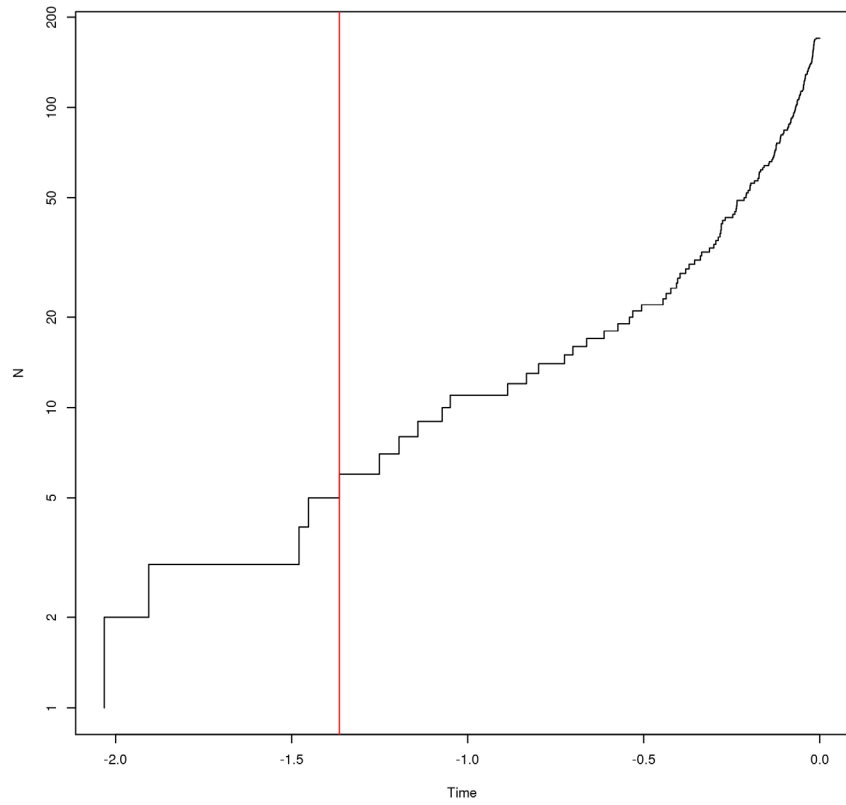
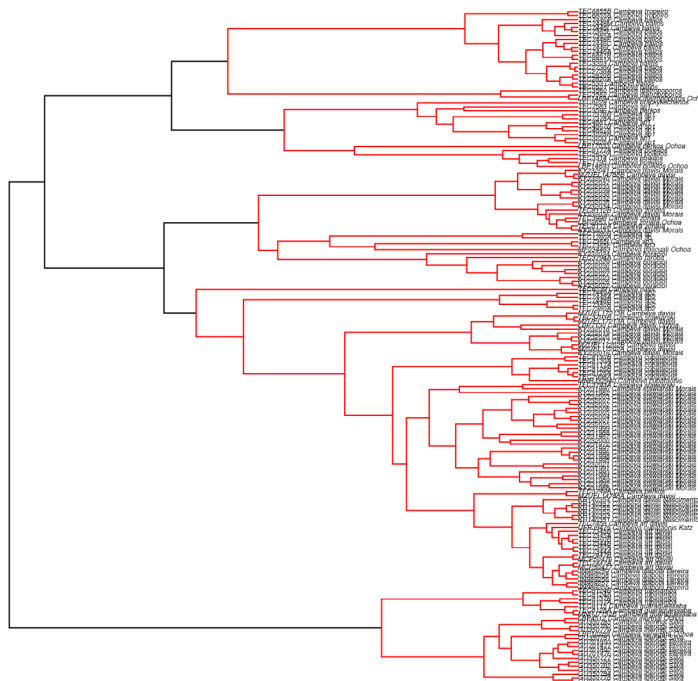


SUPPLEMENTARY MATERIAL





**FIGURE S5** | Bayesian phylogenetic tree of *Cambeva* species obtained from COI data. The vertical red line shows the coalescent branching process estimated by using the single-threshold model in the GMYC combination 3 (strict clock model vs. yule tree prior).

#### HOW TO CITE THIS ARTICLE

- **Donin LM, Ferrer J, Carvalho TP.** Uncertainties and risks in delimiting species of *Cambeva* (Siluriformes: Trichomycteridae) with single-locus methods and geographically restricted data. *Neotrop Ichthyol.* 2022; 20(3):e220019. <https://doi.org/10.1590/1982-0224-2022-0019>