

SUPPLEMENTARY MATERIAL S2

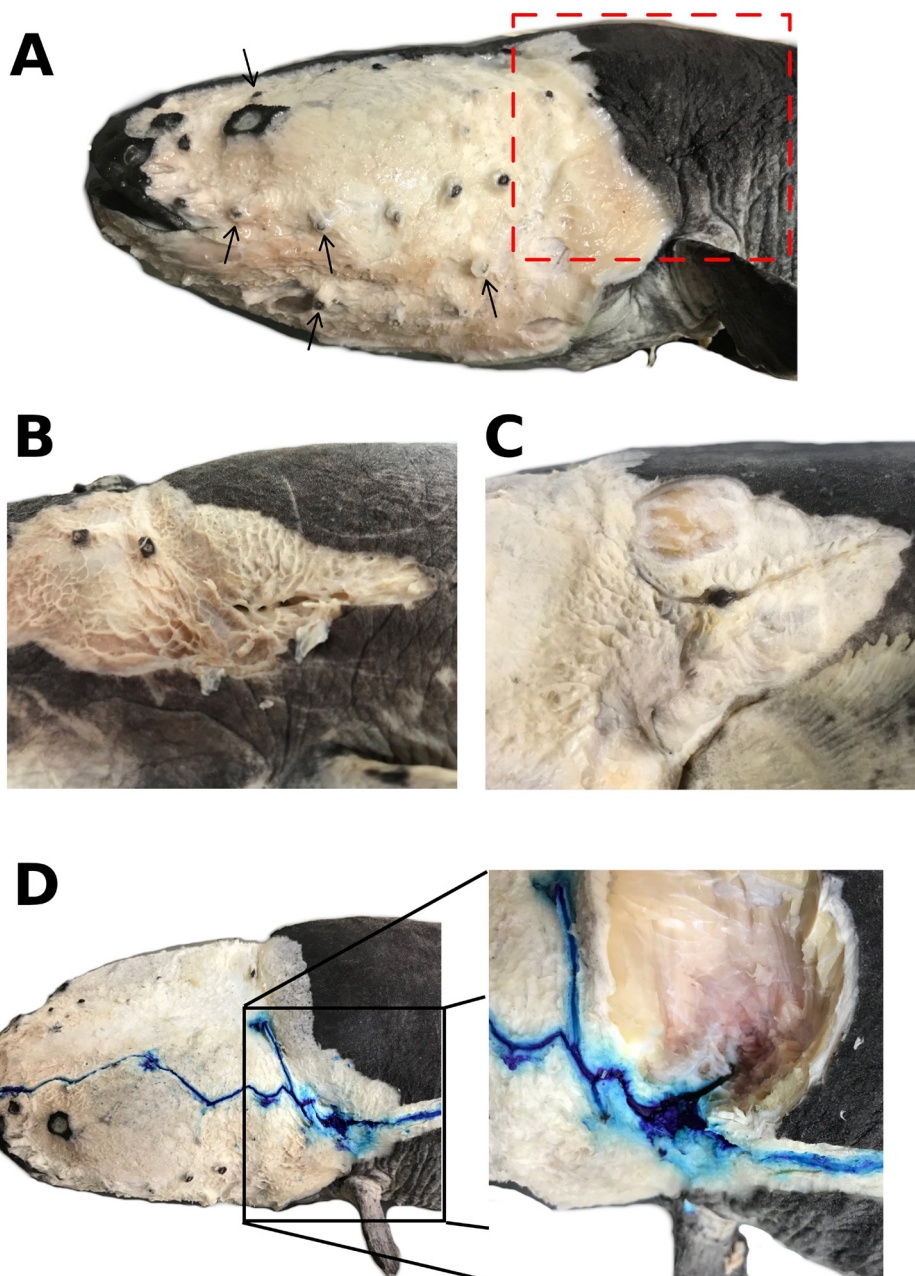


FIGURE S2 | Dissected specimen of *Electrophorus varii* illustrating the cephalic lateral line canal identification methodology. **A.** Lateral view of the head showing pores position (arrows). Red box indicates the area of otic pit explored in the figures B and C; **B.** otic pit openings after removing epidermis and external wall of lateral-line canals (otic and anterior portion trunk canals); **C.** rear thin layer in the otic pit, separating the lateral-line canals from a short chamber that connects to swim bladder; **D.** canals stained by toluidin blue solution, highlighting the short chamber of the otic pit inside the musculature.

This is an open access article under the terms of the Creative Commons Attribution License, which permits use, distribution and reproduction in any medium, provided the original work is properly cited.

Distributed under Creative Commons CC-BY 4.0

© 2021 The Authors. Diversity and Distributions Published by SBI

- Verçoza G, Shibuya A, Bastos DA, Zuanon J, Rapp Py-Daniel LH. Organization of the cephalic lateral-line canals in *Electrophorus varii* de Santana, Wosiacki, Crampton, Sabaj, Dillman, Mendes-Júnior & Castro e Castro, 2019 (Gymnotiformes: Gymnotidae). Neotrop Ichthyol. 2021; 19(2):e200075. <https://doi.org/10.1590/1982-0224-2020-0075>